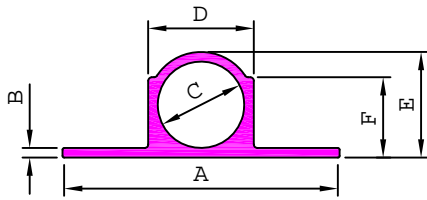


ARCHITECTURAL

TOWER BOLT & HINGES

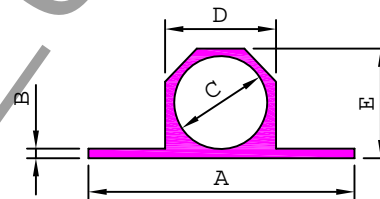
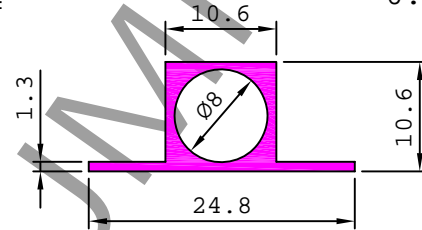


Sl No	Section No	A	B	C	D	E	F	Weight kg/m
43	18055	31.75	1.40	10.20	12.40	12.40	9.10	0.226
44	18056	31.20	1.35	9.70	11.70	11.70	9.00	0.206
45	18057	38.00	1.90	12.60	16.20	16.20	12.60	0.419
46	18058	38.00	2.30	13.00	17.40	17.40	13.20	0.509
47	18059	31.75	0.95	10.20	12.00	12.00	8.80	0.180
48	18060	44.00	1.65	12.80	15.80	15.80	13.80	0.406
49	18062	32.00	1.22	11.00	13.44	13.40	10.80	0.406

Sl No	Section No	A	B	C	D	E	F	Weight kg/m
1	18001	24.50	0.75	8.63	10.10	10.10	8.15	0.121
2	18002	31.75	1.39	9.90	12.45	12.45	9.52	0.248
3	18003	32.00	1.60	11.00	14.00	14.00	11.00	0.302
4	18005	31.75	1.52	10.28	12.82	12.82	9.52	0.253
5	18006	38.00	2.50	13.00	18.00	18.00	14.00	0.570
6	18007	44.00	2.00	13.00	17.00	17.00	13.00	0.493
7	18008	30.00	0.75	9.90	11.40	11.40	9.50	0.156
8	18009	25.00	1.35	8.50	11.00	11.20	9.00	0.202
9	18011	37.00	1.00	11.70	13.60	13.70	10.50	0.229
10	18013	37.50	1.70	12.40	15.70	15.80	12.00	0.379
11	18015	31.75	1.70	10.20	12.40	12.40	9.70	0.244
12	18016	38.00	2.30	12.60	17.10	17.10	13.00	0.506
13	18017	31.20	1.57	9.70	11.90	11.90	9.10	0.229
14	18022	30.75	1.02	9.50	11.30	11.30	9.00	0.176
15	18023	31.75	1.10	10.20	12.10	12.10	9.50	0.197
16	18024	25.00	1.20	8.50	11.20	10.60	9.00	0.186
17	18027	37.50	2.00	12.80	16.50	16.50	13.50	0.439
18	18029	37.00	2.20	12.00	15.00	15.50	11.70	0.396
19	18030	37.00	1.06	12.00	13.40	13.40	10.80	0.205
20	18031	25.40	1.45	8.00	10.50	10.40	8.75	0.194
21	18033	23.50	0.76	8.50	9.85	9.85	8.00	0.114
22	18034	28.00	0.83	9.50	10.75	10.75	8.50	0.131
23	18035	37.50	2.70	12.80	15.70	15.70	11.90	0.414
24	18036	36.00	1.85	12.00	14.90	14.90	11.00	0.342
25	18037	30.00	0.98	9.50	10.90	10.90	8.60	0.150
26	18038	44.00	2.00	13.40	16.40	16.50	14.50	0.450
27	18039	32.00	1.25	11.00	13.40	13.40	10.50	0.246
28	18040	37.00	1.83	12.00	15.00	15.00	11.70	0.354
29	18041	37.00	0.93	12.00	13.20	13.20	10.40	0.182
30	18042	23.50	0.70	8.50	9.80	9.80	7.95	0.109
31	18043	28.00	0.59	9.50	10.68	10.68	8.00	0.113
32	18045	32.00	1.30	11.00	13.60	13.60	10.80	0.262
33	18047	32.00	1.10	11.00	13.20	13.20	10.30	0.228
34	18049	38.00	2.35	13.00	17.50	17.50	13.20	0.520
35	18051	31.00	1.10	9.40	11.40	11.40	8.70	0.188
36	18052	31.50	1.20	10.80	12.80	12.80	10.10	0.216
37	18053	32.00	1.50	10.80	13.00	13.00	9.80	0.242

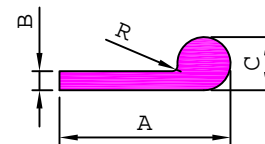
18014

0.217 kg/m



Sl No	Section No	A	B	C	D	E	Weight kg/m
1	18018	31.80	1.50	9.80	12.40	12.70	0.261
2	18019	32.00	1.35	10.80	13.10	13.50	0.255
3	18020	38.00	1.90	12.70	16.00	16.40	0.414

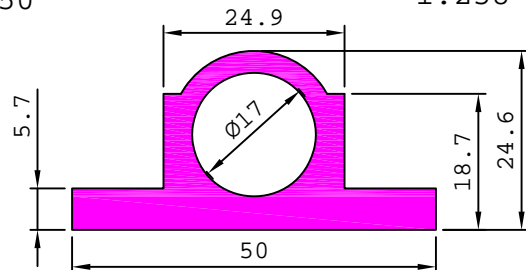
HINGES - FLAT LEG



Sl No	Section No	A	B	C	R	Weight kg/m
1	18206	26.00	3.00	9.00	1.50	0.322

18050

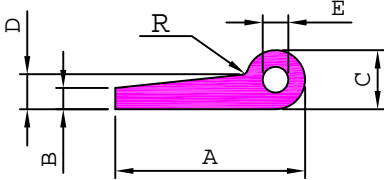
1.258 kg/m



ARCHITECTURAL

HOLLOW HINGES & SPECIAL HINGES

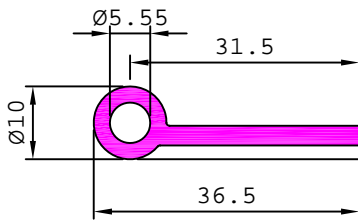
HINGES - HOLLOW



SL. No.	Section No.	A	B	C	D	E	R	Weight kg/m
1	18351	25.00	2.60	6.10	2.60	3.60	-	0.189
2	18357	25.25	3.10	6.50	3.10	3.20	1.50	0.231
3	18359	25.60	3.10	6.80	3.10	3.40	--	0.237
4	18361	24.30	2.10	6.00	2.60	3.60	--	0.170
5	18353	35.76	3.10	9.52	3.60	5.00	-	0.390
6	18354	36.50	3.20	10.00	3.80	4.00	1.50	0.444
7	18356	37.00	4.00	11.00	4.00	5.55	1.50	0.489
8	18355	37.00	4.00	11.00	4.76	5.55	-	0.515

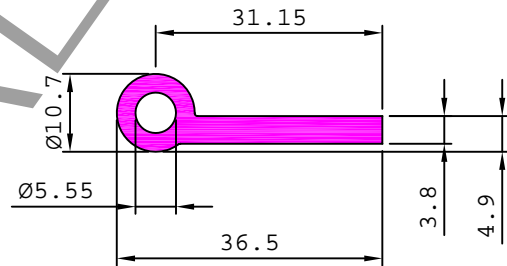
18401

0.343 kg/m



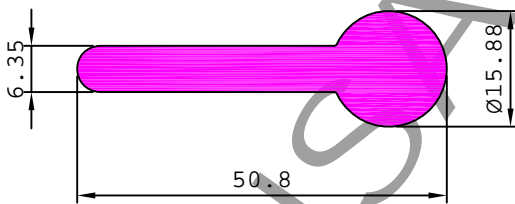
18402

0.450 kg/m



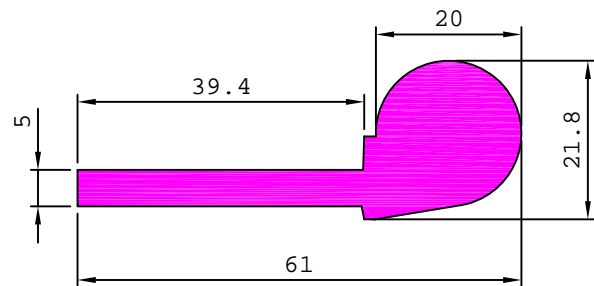
18405

1.125 kg/m



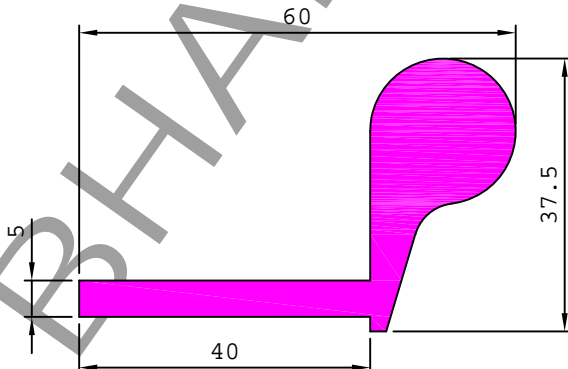
18406

1.515 kg/m



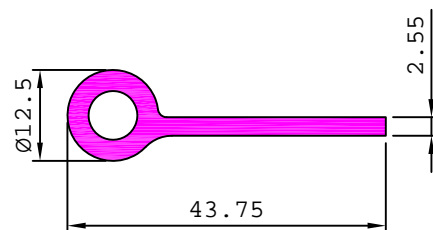
18407

1.683 kg/m



18417

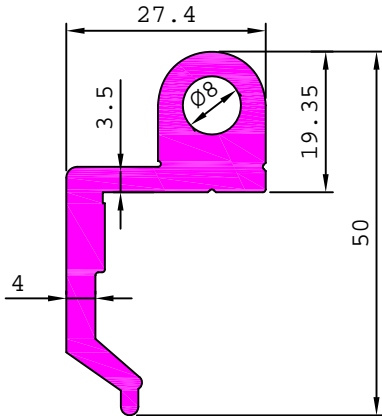
0.465 kg/m



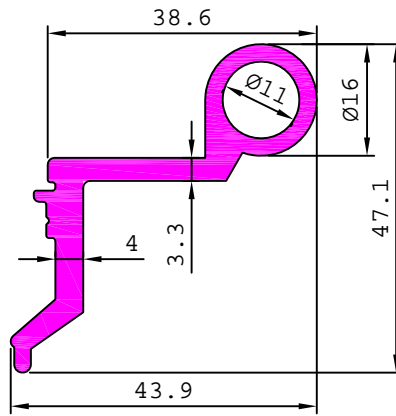
ARCHITECTURAL

SPECIAL HINGES & LATCH

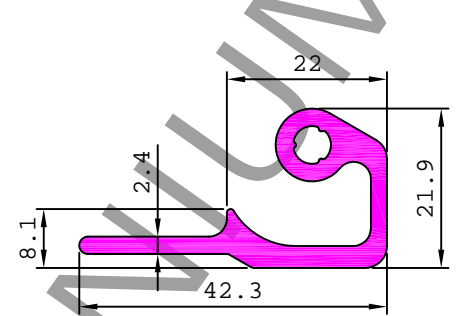
18423 1.063 kg/m



18424 0.896 kg/m

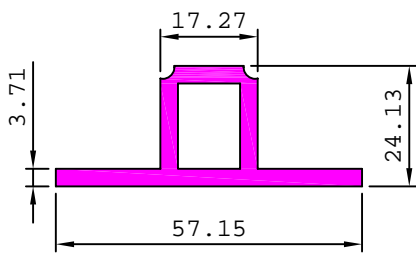


18425 0.632 kg/m

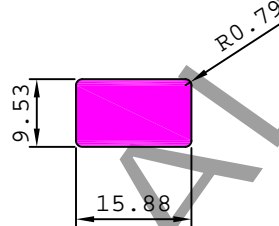


LATCH

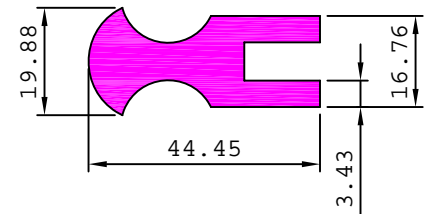
18451 1.037 kg/m



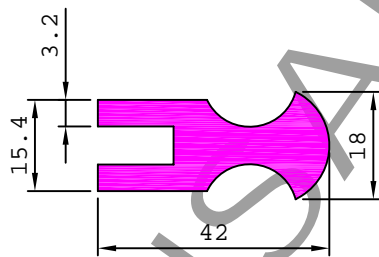
18452 0.407 kg/m



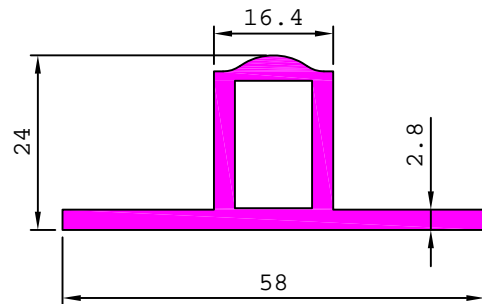
18453 1.265 kg/m



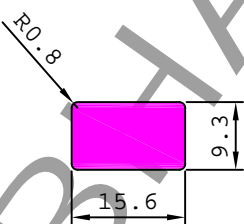
18456 1.060 kg/m



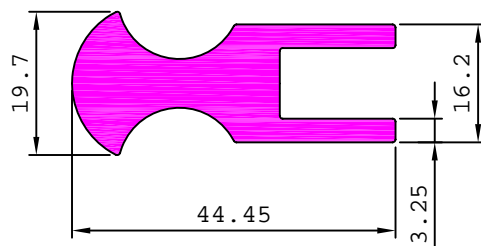
18459 0.828 kg/m



18458 0.390 kg/m



18460 1.220 kg/m



18461 0.446 kg/m

